

TOMARTACUS

Design Portfolio

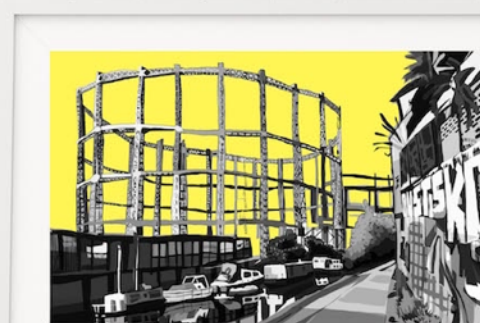
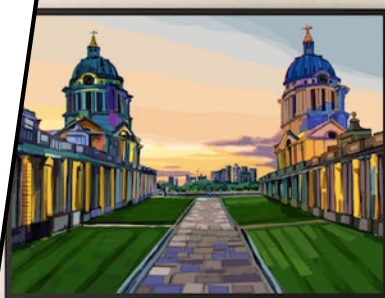
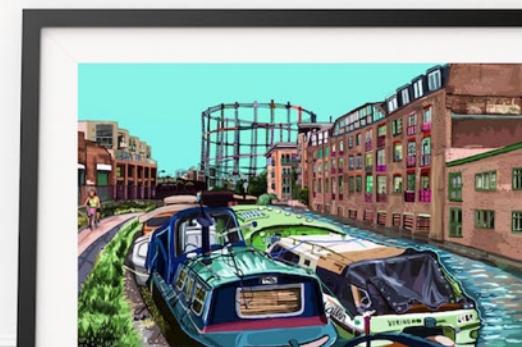
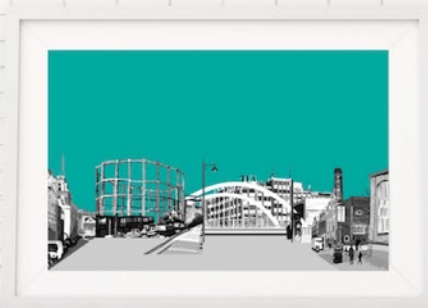
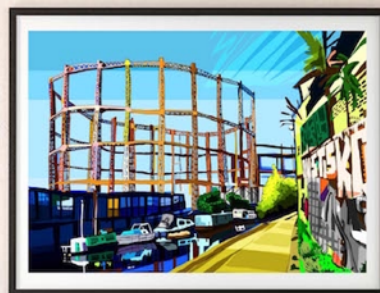


**GORDON RAMSAY
GROUP**

Artwork for Gordon Ramsay's The Narrow, Limehouse

“We are getting
great feedback from
the locals.”

- Barry Kavanagh,
General Manager





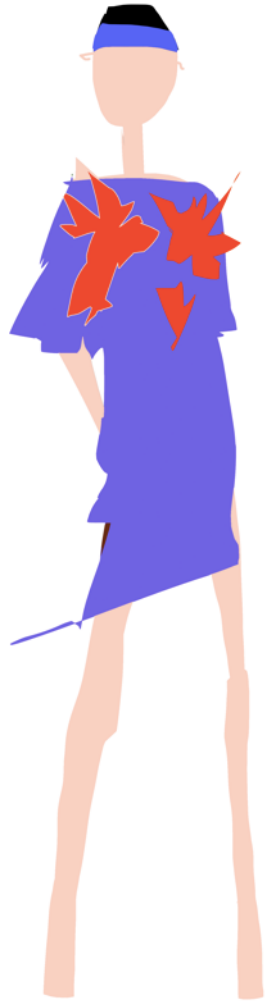
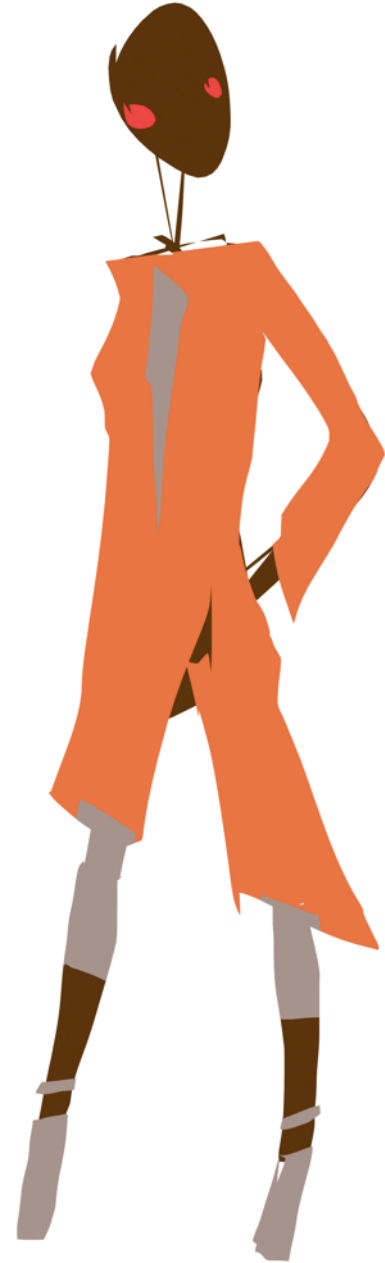
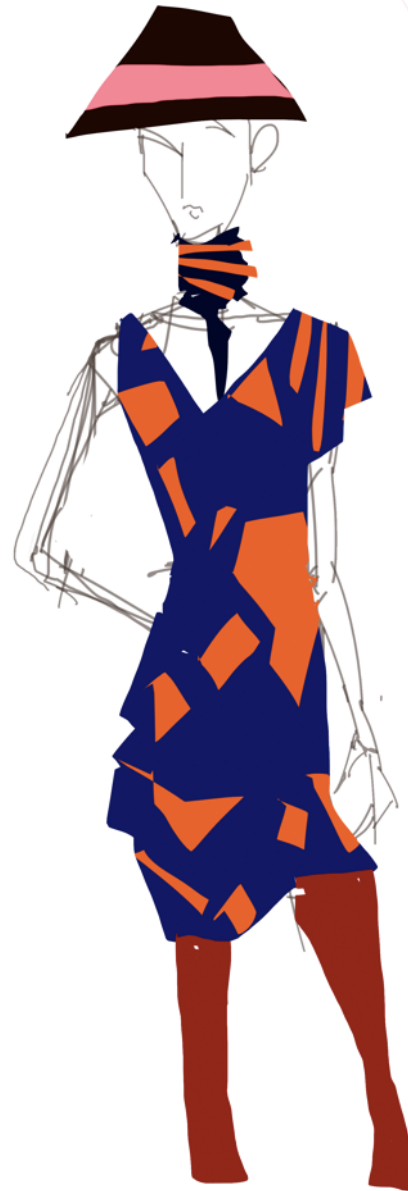
Save the Children

**ALEXANDER
MCQUEEN**


**Vivienne
Westwood**

**Vivienne Westwood &
Alexander McQueen
Designs for Mary's
Living and Giving**

**“They’re fantastic. They
really capture the style of
Mary’s Living and Giving”
— Brand Marketing at Save the Children**





Digital Content for Coca-Cola

We designed content for Coca-Cola's Halloween, Christmas and New Year's Eve digital campaigns.

Featured in 15 countries across Central and Southern Europe.





Wallpaper Art for Criteo's London Office

"The process from
first meeting,
design sign off to
execution was
painless and the
end result...
... Simply
amazing!"

- Sam Jenkins,
Senior
Workplace
Experience
Manager



mary's living & giving shop

for  Save the Children

Product Design for Mary's Living & Giving

"This is perfect"

— Retail Buyer at Save the Children

MARY'S LIVING AND GIVING

mary's
living
&
giving



For Save the Children



London Pub Portraits

“Beautiful artwork... we love it”

— Cat and Mutton, Broadway Market



“I would love the artwork of the grapes, to hang on the wall in the pub .”

- Manager/Owner of The Grapes, Limehouse



mary's living & giving shop

for  Save the Children

Artwork for Mary's Living and Giving Shops Nationwide

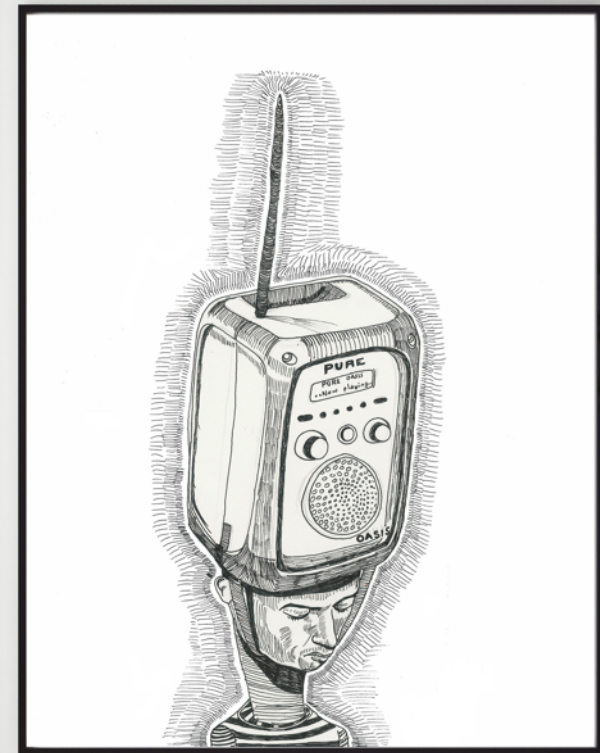
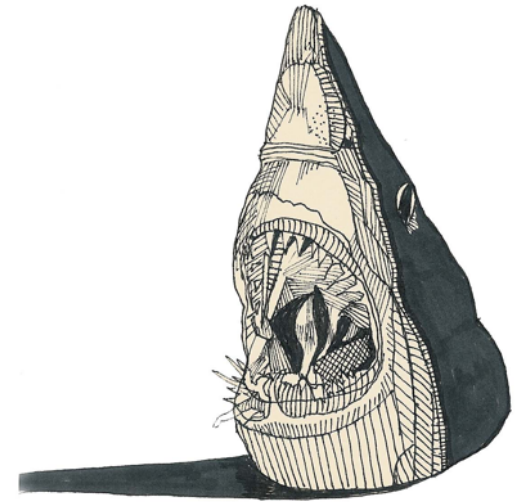
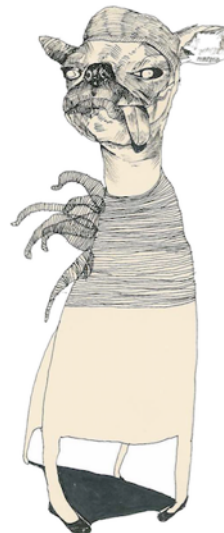
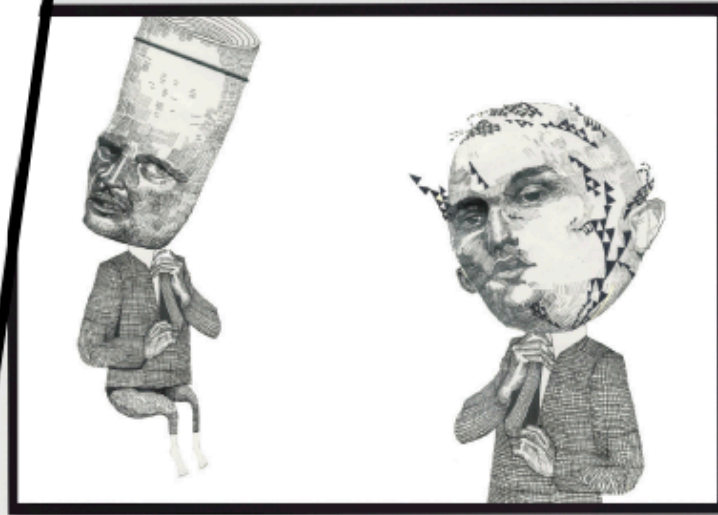
“Fabulous”

— Kate Avenell, Head of Shop
Development at Save the Children



Suited & Booted, Dogtopus and Radiohead

Sketches for our own
brand Tomartacus:
www.tomartacus.co.uk



Tech Company Office Design in New York

Work in progress.



TOMARTACUS

Contact:

E: jess@tomartacus.co.uk

M: 07341661986

Website:

www.tomartacus.co.uk

Instagram:

[@tomartacus](https://www.instagram.com/tomartacus)

